



Electrical Engineering Services for Every Need

Design, Build, Support, Install, Start Up, and Maintain

The WESCO and Eaton's Electrical Services & Systems team offers a comprehensive portfolio of services that help you achieve business value, while keeping your power distribution systems safe, efficient, and up-to-date.



WESCO[®]
Aftermarket and
Engineering Services



Powering Business Worldwide

DESIGN

Engineering and consulting services from WESCO and Eaton focus on understanding your business requirements and setting strategies for your power system to satisfy them. Our engineers and consultants can help diagnose problems, identify ways to improve performance, or transform concepts into flexible, practical solutions that can improve productivity and capital utilization.



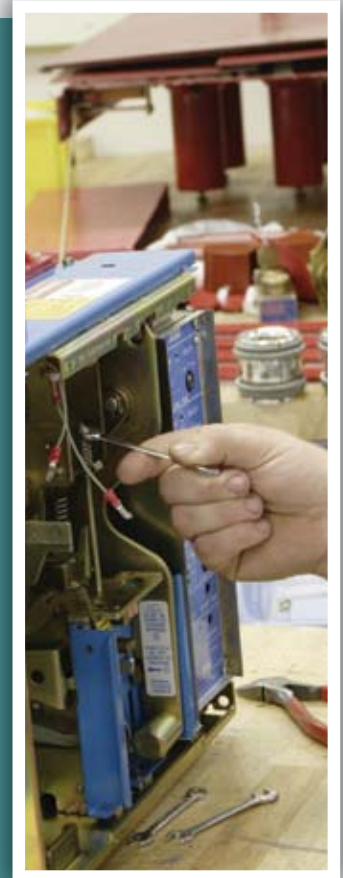
Engineering and Consulting Services

- Power Quality and Reliability Studies
- Energy Management Studies
- Arc Flash and Safety Studies
- Construction Power System Studies
- Business Continuity Studies
- PowerChain Management® Solution Studies
- Professional Consulting Services
- Design and Engineering Services
- Power System Studies



BUILD

WESCO and Eaton's modernization and turnkey power system services place personnel in the field to complete a variety of undertakings, such as managing a construction project from start to finish, reconditioning or upgrading equipment, or modernizing your power system. With our project management services, you'll have a single point of accountability and a reduced risk of project delays and failures. The result is a safer, more reliable, and cost-efficient power system.



Turnkey and Modernization Services

- Turnkey Project Implementation
- Power Management
- Power System Projects
- Power Quality and Reliability Projects
- Energy Management Projects
- Safety and Risk Management Projects
- Equipment Reconditioning Services
- PowerChain Equipment Modernization Projects

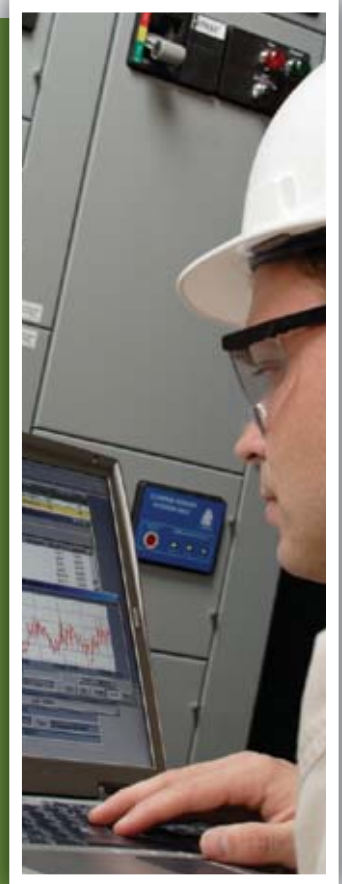


SUPPORT

Contract and support services from WESCO and Eaton provide the maintenance, parts, and service you need to get the best performance from your equipment already in place. Our field technicians and customer support engineers can start up and commission equipment, perform planned maintenance, monitor performance, and diagnose problems remotely, as well as respond to emergencies on a 24/7 basis, 365 days a year.

Contract and Support Services

- Equipment Start Up and Commissioning
- Maintenance and Support Services
- Operational and Maintenance Training
- Remote Monitoring Services
- Enterprise Monitoring Projects (Foreseer)
- Field Service and Aftermarket Parts
- Emergency Service Available Around-the-Clock
- PowerChain Management Solution Services



WESCO and Eaton... Delivering Unrivaled Solutions

DESIGN

Engineering and consulting services focus on understanding your requirements and setting strategies for managing the power distribution system to satisfy your business needs.

BUILD

Modernization and turnkey services put people in the field to get your projects done, whether you're upgrading an existing installation or building a new facility from scratch.

SUPPORT

Contract and support services help you make the most of the assets you have in place.

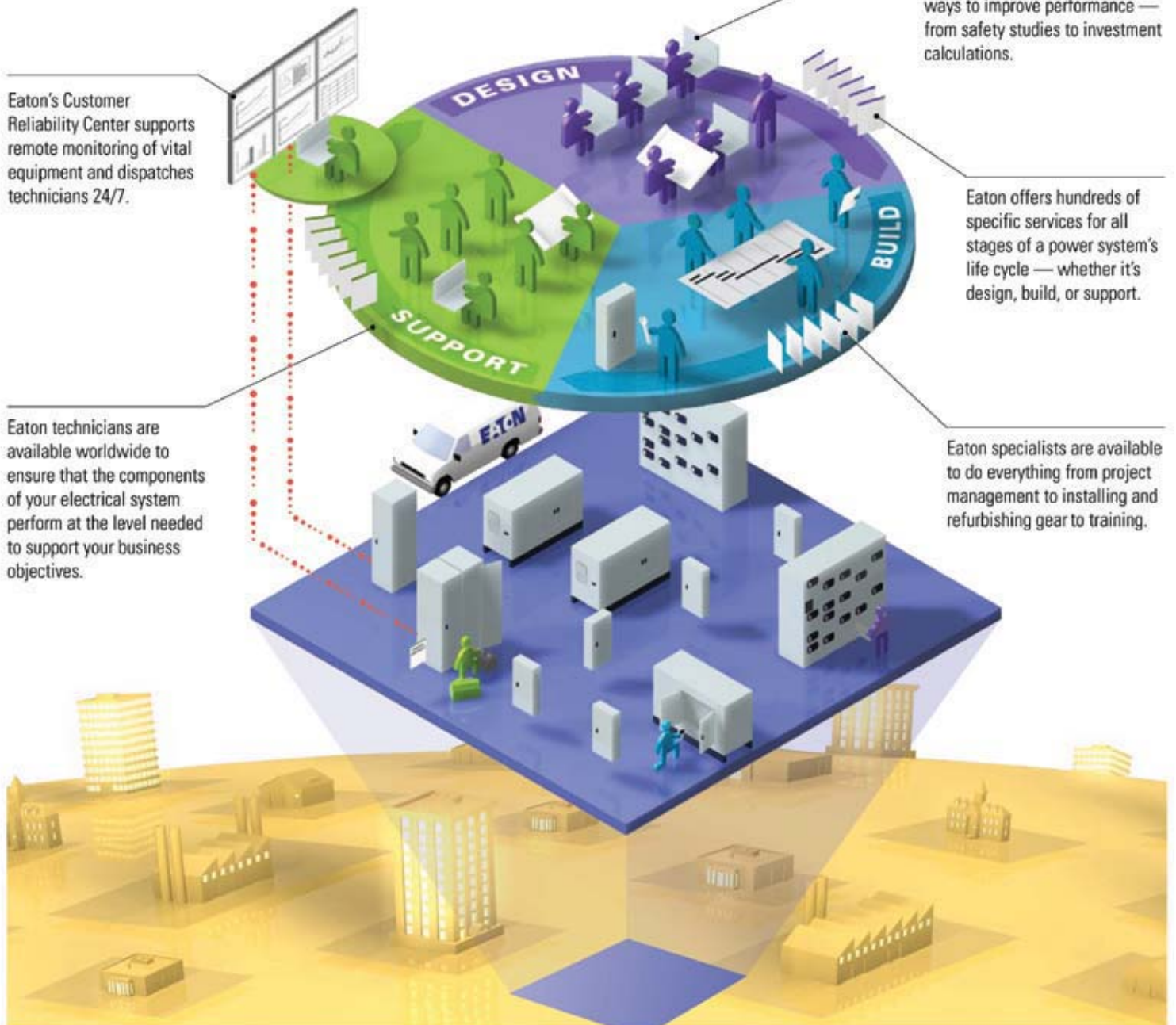
Eaton's Customer Reliability Center supports remote monitoring of vital equipment and dispatches technicians 24/7.

Eaton technicians are available worldwide to ensure that the components of your electrical system perform at the level needed to support your business objectives.

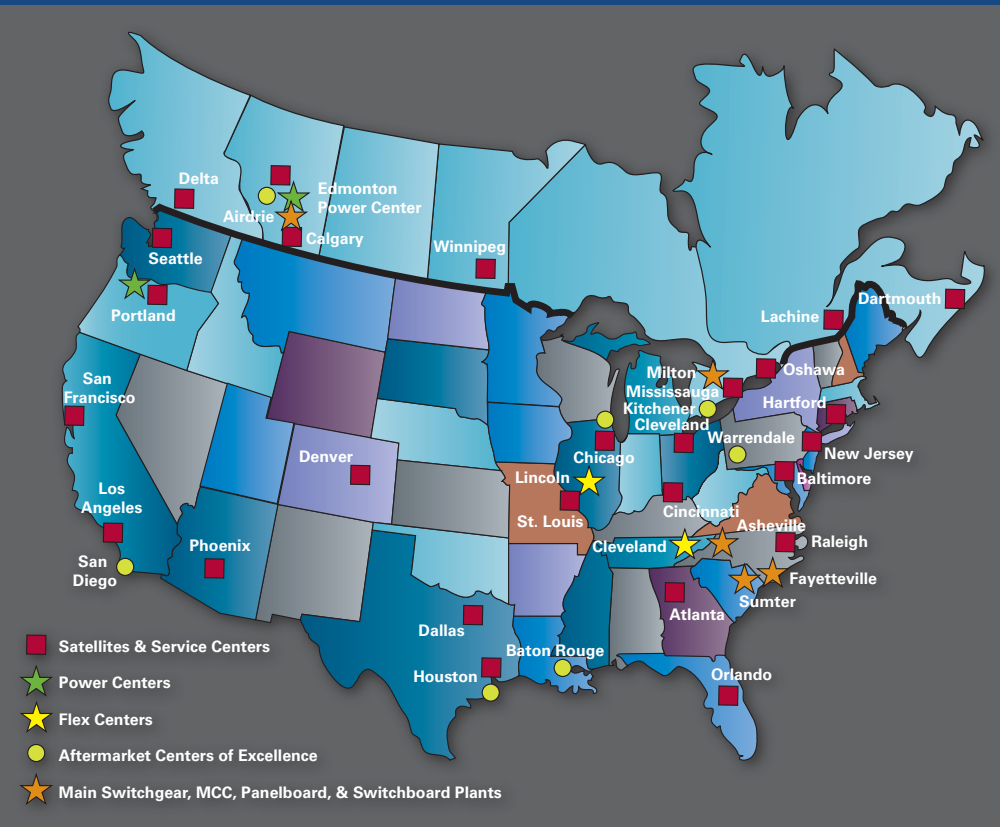
Eaton engineers and consultants diagnose problems and identify ways to improve performance — from safety studies to investment calculations.

Eaton offers hundreds of specific services for all stages of a power system's life cycle — whether it's design, build, or support.

Eaton specialists are available to do everything from project management to installing and refurbishing gear to training.



Eaton is the only electrical manufacturer with regionally located manufacturing plants across the United States and Canada to cater to your individual needs. We're probably right in your backyard. Equipment is UL and CSA® listed, and conforms to NEC®, and National Electric Manufacturers Association (NEMA). We've got you covered.



Service Centers

| | |
|--|--|
| ATLANTA 7000 Highlands Parkway SE Suite 103 Smyrna, GA 30082 678.309.4260 | DENVER 2450 Airport Boulevard, Suite A Aurora, CO 80011 303.366.9949 |
| CHICAGO 230 Windy Point Drive Glendale Heights, IL 60139 630.260.6304 | HARTFORD 40 A International Drive Windsor, CT 06095 860.683.4221 |
| CINCINNATI 7104 Fairfield Business Drive Fairfield, OH 45014 513.682.4000 | HOUSTON 10810 West Little York Suite 140 Houston, TX 77041 713.939.9696 |
| | LOS ANGELES 12760 East Florence Avenue Santa Fe Springs, CA 90670 562.944.6413 |

Aftermarket Centers of Excellence (USA)

| | |
|---|---|
| BATON ROUGE 11568 Mercantile Drive Baton Rouge, LA 70809 225.756.1541 | HOUSTON 8706 Meldrum Lane Houston, TX 77075 713.948.8231 |
| CHICAGO 210 Windy Point Drive Glendale Heights, IL 60139 630.260.6302 | PITTSBURGH 130 Commonwealth Drive Warrendale, PA 15086 724.779.5885 |
| | SAN DIEGO 2727 Kurtz Street San Diego, CA 92110 619.692.6538 |

Satellite Plants (USA)

| | | | |
|---|--|---|---|
| ATLANTA 7000 Highlands Parkway SE Suite 102 Smyrna, GA 30082 678.309.4260 | DALLAS 631 Westport Parkway Suite 100 Grapevine, TX 76051 817.251.6733 | LOS ANGELES 11120 Philadelphia Street Suite A Mira Loma, CA 91752 951.685.5788 | RALEIGH 2933 South Miami Boulevard Suite 111 Durham, NC 27703 919.544.7074 |
| BALTIMORE 6671 Santa Barbara Road Suites A-F Elkridge, MD 21075 410.796.7777 | DENVER 2450 Airport Road Suite C Aurora, CO 80011 303.366.2080 | NEW JERSEY 96 Stemmers Lane Westampton, NJ 08060-5652 609.835.4230 | ST. LOUIS 56 Soccer Park Road Fenton, MO 63026 636.717.3500 |
| CHICAGO 20 Windy Point Drive Glendale Heights, IL 60139 630.260.6303 | HARTFORD 40A International Drive Windsor, CT 06095 860.298.1305 | ORLANDO 9436 Southside Park Court Suite 100 Orlando, FL 32819 407.264.9300 | SAN FRANCISCO 20923 Cabot Boulevard Hayward, CA 94545 510.784.8981 |
| CLEVELAND 12875 Corporate Drive Unit E Parma, OH 44130 216.433.0616 | HOUSTON 10810 West Little York Suite 100 Houston, TX 77041 713.688.8430 | PHOENIX 921 South Park Lane Suite 1 Tempe, AZ 85281 480.449.4222 | SEATTLE 1604 15th Street SW Suite 114 Auburn, WA 98001 253.833.5021 |

Aftermarket Centers of Excellence (CAN)

| | |
|--|---|
| EDMONTON 9623 25th Avenue Edmonton, AB Canada 780.490.3280 | KITCHENER 975 Bleams Road, Unit 1 Kitchener, ON N2E 3Z5 Canada 519.893.4848 x32 |
|--|---|

Satellite Plants (CAN)

| | |
|--|--|
| CALGARY, AB 2611 Hopewell Pl. NE, Unit #133 403.252.3324 | LACHINE, PQ 1410, 55e Avenue 514.633.9316 |
| DARTMOUTH, NS 32 Troop Avenue Unit 100 902.481.3400 | MISSISSAUGA, ON 4120 Sladeview Crescent 905.820.0108 |
| DELTA, BC 1693 Cliveden Avenue 604.519.1250 | OSHAWA, ON 1333 Thornton Road S. Unit #2 905.443.0981 |
| EDMONTON, AB 12465 153rd Street 780.490.3280 | WINNIPEG, MB 1650 Notre Dame Avenue Unit 13 204.694.0569 |

WESCO International, Inc. (NYSE: WCC) is a publicly traded Fortune 500 holding company, headquartered in Pittsburgh, Pennsylvania, whose primary operating entity is WESCO Distribution, Inc. WESCO Distribution is a leading distributor of electrical construction products, electrical and industrial maintenance, repair, and operating (MRO) supplies, and is the nation's largest provider of integrated supply services. 2008 annual sales were approximately \$6.1 billion. The Company employs approximately 7,300 people, maintains relationships with over 24,000 suppliers, and serves more than 110,000 customers worldwide. Major markets include commercial and industrial firms, contractors, government agencies, educational institutions, telecommunications businesses, and utilities. WESCO operates 7 automated distribution centers and approximately 400 full-service Branches in North America and select international markets, providing a local presence for area customers and a global network to serve multi-location businesses and multinational corporations.

WESCO Distribution

225 West Station Square Drive
Suite 700
Pittsburgh, PA 15219
tel: 412.454.2200
fax: 412.454.2505
www.wesco.com

© Copyright 2009 WESCO Distribution, Inc. All Rights Reserved. Printed in the USA.

The Eaton logo and PowerChain Management brand are registered trademarks of Eaton Corporation. NEC is a registered trademark of National Electric Code. CSA is a registered trademark of CSA International. NEMA is a registered trademark of National Electrical Manufacturers Association.



For more information email aftermarketsolutions@wesco.com or visit www.wesco.com to find a branch nearest you.